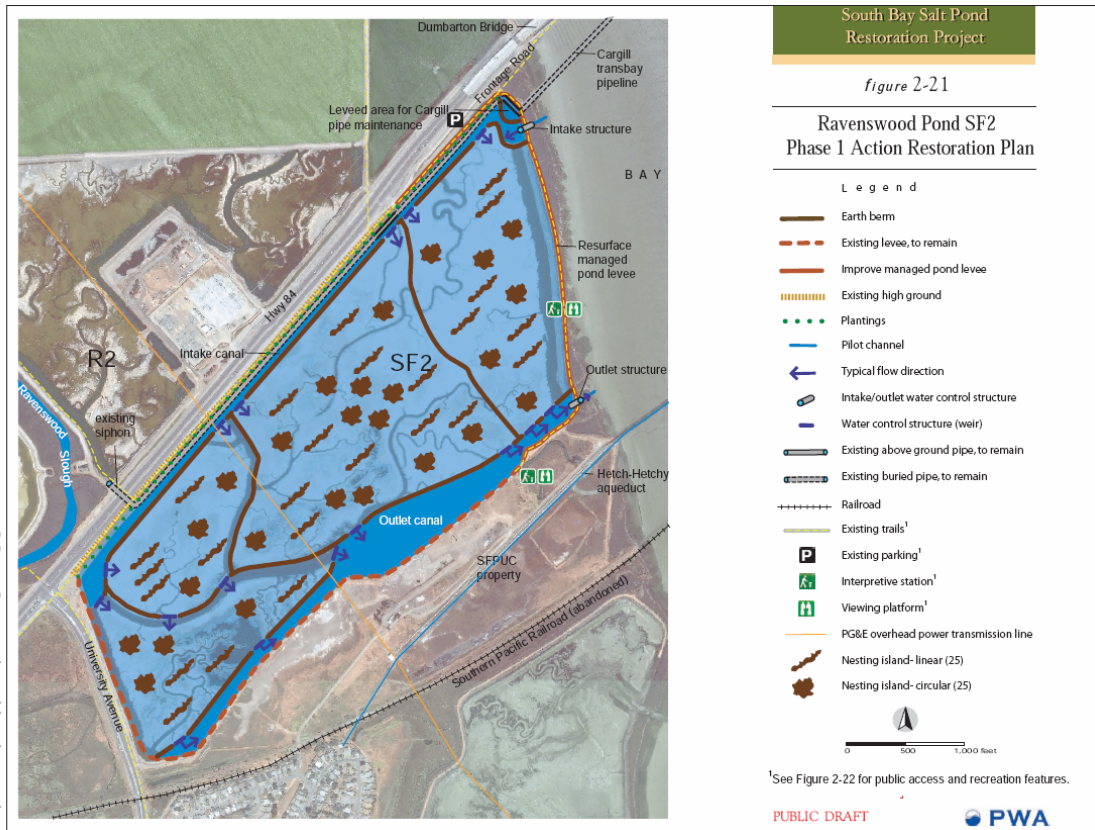


POND SF2 RECONFIGURED POND

Draft July 10, 2007



Restoration Area: 240 acres

Number of Cells: 4

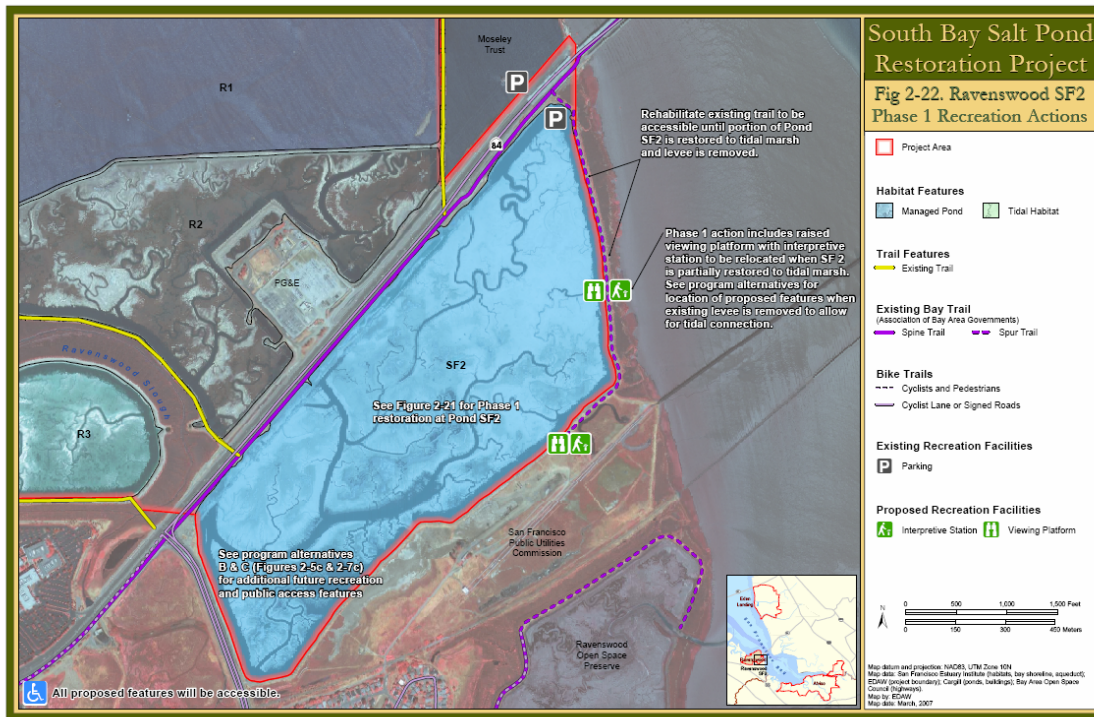
Estimated Cost (construction & adaptive management): \$5.5 million

Issues: 1) Bird usage/nesting (Forster’s terns, avocets, Caspian terns, black-necked stilts, and snowy plovers), 2) Water control structure management, 3) Water quality, 4) Vegetation management, 5) Levee management, 6) Infrastructure access (Cargill pipe and PG&E)

Applied Studies Questions: 1) will reconfigured ponds maintain numbers and increase reproductive success of birds; and 2) what management approaches effectively control vegetation encroachment on nesting islands and shallow water foraging areas and mammalian and avian predation of shorebirds?

POND SF2 RECONFIGURED POND

Draft July 10, 2007



Public Access: The Ravenswood pond complex is situated on either side of the busy Dumbarton Bridge and highly visible to passersby. This affords an opportunity to share information about the SBSP Restoration Project and attract visitors to explore the area. Signage would include the Project logo and present key messages about the SBSP Restoration Project as well as direct people to strategic access points. The public access plan for this area also includes rehabilitation of the existing Bay Trail spur along the bayside of Pond SF2 and the addition of two viewing platforms and interpretive stations along this trail that describe the restoration process of developing a managed pond as well as the relationship to the Bay and future tidal marsh restoration in this location. The trail follows an existing levee that would be rehabilitated to provide a width of 6 to 8 ft of compacted earth and allow multi-use excluding equestrians.

The viewing platforms would be raised above the existing grade of the levee trail to allow visitors a panorama view of the Bay and the large expanse of adjacent managed pond. Overall, the areas around Pond SF2 would be cleaned up and native vegetation would be strategically planted to visually enhance the SBSP Restoration Project area and provide transitional plantings between the highway corridor and the adjacent restoration lands.

Estimated Cost (construction & adaptive management): \$600,000

Issues: Public access effects on birds, management and maintenance

Applied Studies Questions: 1) Will trails and other public access features / activities have significant negative effects on wildlife species?